

Quality Control Certificate



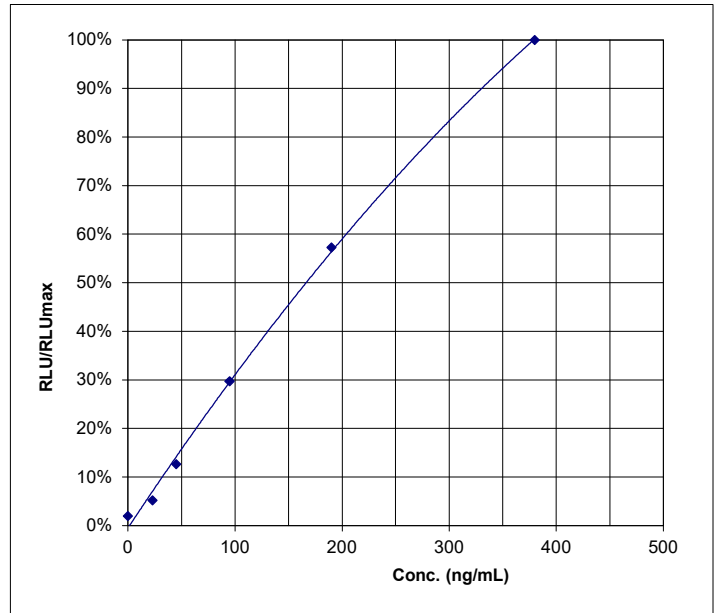
IRT Neonatal Luminescence Immunoassay

REF RE68019	LOT LIT205	2028-03-31 YYYY-MM-DD
--------------------	-------------------	---------------------------------

Final Release Results:

	Concentration ng/mL	Measured value RLU	Range RLU	RLU/RLUmax
CAL A	0	33095	-	2%
CAL B	23	89135	-	5%
CAL C	45	215235	-	13%
CAL D	95	506070	-	30%
CAL E	190	974895	-	57%
CAL F	380	1702150	-	100%

	Concentration found ng/mL	Acceptable range		
		lower limit ng/mL	target ng/mL	upper limit ng/mL
CONTROL 1	77	51	72	94
CONTROL 2	137	93	133	173



Kit Composition:

REF	LOT		REF	LOT	
KLIT655	CONTROL 1	292	2028-03	KLIT755	CONC ASSAYBUF
KLIT665	CONTROL 2	293	2028-03	KLZZ635	LUMINREAG
KLIT511	MTP	K792	2028-05	KLZZ879	CONC WASHBUF
KLIT545	CONC ENZCONJ	K795	2028-05		
KLIT615	CAL A-F	291	2028-03		

Valid edition of the instructions for use: 2024-10

This product has been tested successfully by the Quality Control Department and was released for sale according to the existing specifications.

Verified by: Dr. Spangenberg

Accepted

Validation date: 2026-05-11

This document has been produced electronically and is valid without a signature.



IBL International GmbH
Flughafenstr. 52A, 22335 Hamburg, Germany

Tel.: + 49 (0) 40 532891 -0 Fax: -11
E-MAIL: ibl@tecan.com
WEB: www.tecan.com/ibl