

# Quality Control Certificate

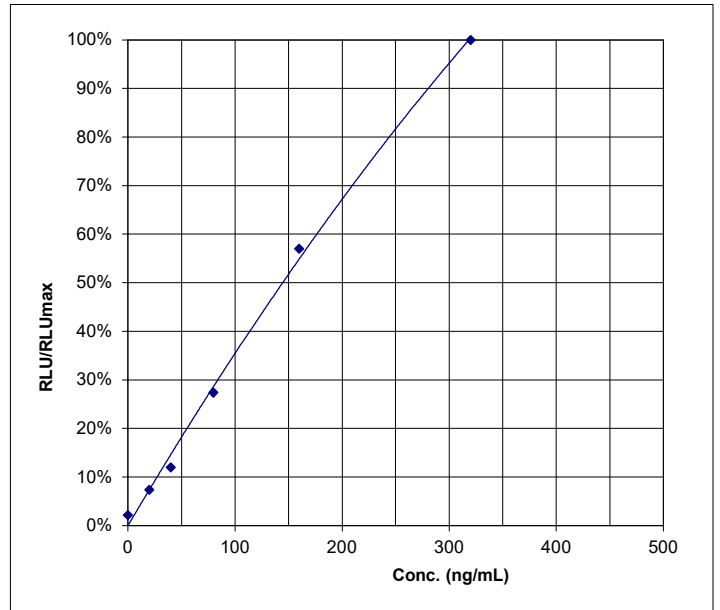


## IRT Neonatal Luminescence Immunoassay

<b>REF</b> RE68019	<b>LOT</b> LIT203	<b>2027-10-31</b> YYYY-MM-DD
--------------------	-------------------	---------------------------------

**Final Release Results:**

	Concentration ng/mL	Measured value RLU	Range RLU	RLU/RLUmax
CAL A	0	47770	-	2%
CAL B	20	161705	-	7%
CAL C	40	262155	-	12%
CAL D	80	599400	-	27%
CAL E	160	1247995	-	57%
CAL F	320	2188830	-	100%



	Concentration found ng/mL	Acceptable range		
		lower limit ng/mL	target ng/mL	upper limit ng/mL
CONTROL 1	58	42	60	77
CONTROL 2	114	79	114	148

**Kit Composition:**

REF	LOT		REF	LOT	
KLIT655	CONTROL 1	282	2027-10	KLIT755	CONC ASSAYBUF
KLIT665	CONTROL 2	283	2027-10	KLZZ635	LUMINREAG
KLIT511	MTP	K460	2027-11	KLZZ879	CONC WASHBUF
KLIT545	CONC ENZCONJ	K473	2027-11		
KLIT615	CAL A-F	281	2027-10		

Valid edition of the instructions for use: 2024-10

**This product has been tested successfully by the Quality Control Department and was released for sale according to the existing specifications.**

Verified by: Dr. Spangenberg

**Accepted**

Validation date: 2025-12-16

This document has been produced electronically and is valid without a signature.



**IBL International GmbH**  
Flughafenstr. 52A, 22335 Hamburg, Germany

Tel.: + 49 (0) 40 532891 -0 Fax: -11  
E-MAIL: [ibl@tecan.com](mailto:ibl@tecan.com)  
WEB: [www.tecan.com/ibl](http://www.tecan.com/ibl)