

# Quality Control Certificate



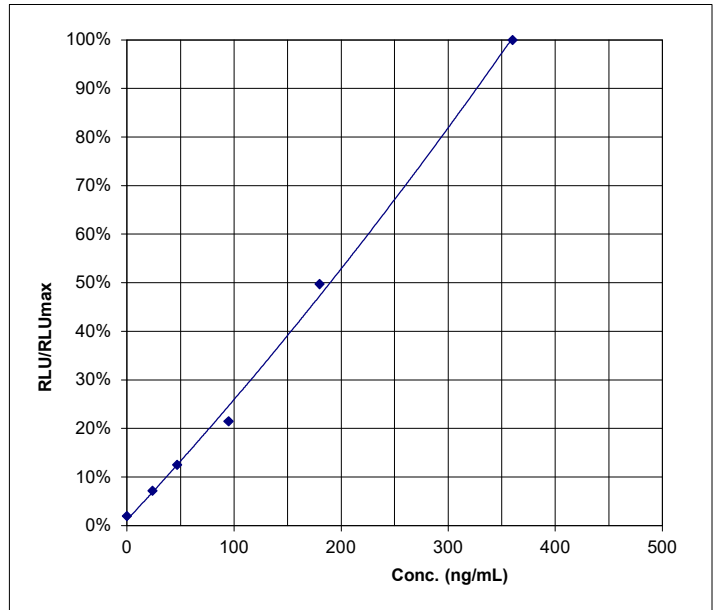
## IRT Neonatal Luminescence Immunoassay

<b>REF</b> RE68019	<b>LOT</b> LIT199	<b>2026-09-30</b> YYYY-MM-DD
--------------------	-------------------	---------------------------------

**Final Release Results:**

	Concentration ng/mL	Measured value RLU	Range RLU	RLU/RLUmax
CAL A	0	22480	-	2%
CAL B	24	81620	-	7%
CAL C	47	141935	-	13%
CAL D	95	243180	-	21%
CAL E	180	563645	-	50%
CAL F	360	1133880	-	100%

	Concentration found ng/mL	Acceptable range		
		lower limit ng/mL	target ng/mL	upper limit ng/mL
CONTROL 1	95	58	83	108
CONTROL 2	148	98	140	182



**Kit Composition:**

REF	LOT		REF	LOT	
KLIT655	CONTROL 1	249	2026-12	KLIT755	CONC ASSAYBUF
KLIT665	CONTROL 2	250	2026-12	KLZZ635	LUMINREAG
KLIT511	MTP	L637	2026-09	KLZZ879	CONC WASHBUF
KLIT545	CONC ENZCONJ	L829	2027-01		
KLIT615	CAL A-F	248	2026-12		

Valid edition of the instructions for use: 2024-10

**This product has been tested successfully by the Quality Control Department and was released for sale according to the existing specifications.**

Verified by: Dr. Spangenberg

**Accepted**

Validation date: 2025-02-07

This document has been produced electronically and is valid without a signature.



**IBL International GmbH**  
Flughafenstr. 52A, 22335 Hamburg, Germany

Tel.: + 49 (0) 40 532891 -0 Fax: -11  
E-MAIL: [ibl@tecan.com](mailto:ibl@tecan.com)  
WEB: [www.tecan.com/ibl](http://www.tecan.com/ibl)