

# Quality Control Certificate

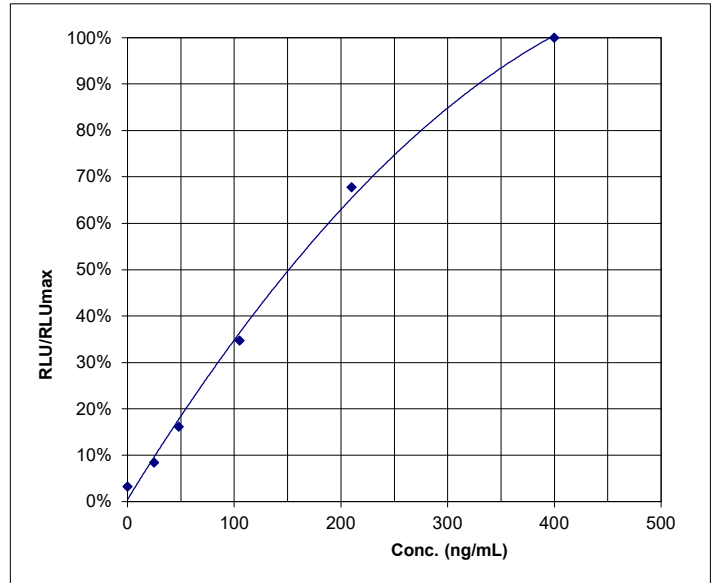


## IRT Neonatal Luminescence Immunoassay

<b>REF</b> RE68019	<b>LOT</b> LIT198	<b>2026-06-30</b> YYYY-MM-DD
--------------------	-------------------	---------------------------------

**Final Release Results:**

	Concentration ng/mL	Measured value RLU	Range RLU	RLU/RLUmax
CAL A	0	48865	-	3%
CAL B	25	126205	-	8%
CAL C	48	241915	-	16%
CAL D	105	519810	-	35%
CAL E	210	1014640	-	68%
CAL F	400	1497610	-	100%



	Concentration found ng/mL	Acceptable range		
		lower limit ng/mL	target ng/mL	upper limit ng/mL
CONTROL 1	64	47	67	87
CONTROL 2	123	90	129	168

**Kit Composition:**

REF		LOT		REF		LOT	
KLIT655	CONTROL 1	240	2026-09	KLIT755	CONC ASSAYBUF	L648	2026-09
KLIT665	CONTROL 2	241	2026-09	KLZZ635	LUMINREAG	L656	2026-09
KLIT511	MTP	L637	2026-09	KLZZ879	CONC WASHBUF	L431	2026-06
KLIT545	CONC ENZCONJ	L650	2026-10				
KLIT615	CAL A-F	239	2026-09				

Valid edition of the instructions for use: 2024-10

**This product has been tested successfully by the Quality Control Department and was released for sale according to the existing specifications.**

Verified by: M.Dries

Accepted

Validation date: 2024-10-28

This document has been produced electronically and is valid without a signature.



**IBL International GmbH**  
Flughafenstr. 52A, 22335 Hamburg, Germany

Tel.: + 49 (0) 40 532891 -0 Fax: -11  
E-MAIL: [ibl@tecan.com](mailto:ibl@tecan.com)  
WEB: [www.tecan.com/ibl](http://www.tecan.com/ibl)