

Quality Control Certificate

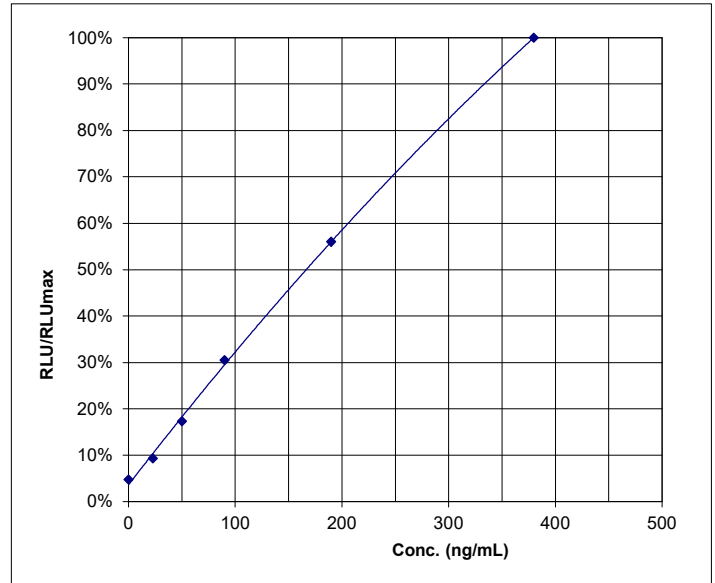


IRT Neonatal Luminescence Immunoassay

REF RE68015	LOT LIT202	2027-06-30 YYYY-MM-DD
--------------------	-------------------	---------------------------------

Final Release Results:

	Concentration ng/mL	Measured value RLU	Range RLU	RLU/RLUmax
CAL A	0	81850	-	5%
CAL B	23	159710	-	9%
CAL C	50	295595	-	17%
CAL D	90	521055	-	31%
CAL E	190	956725	-	56%
CAL F	380	1708270	-	100%



	Concentration found ng/mL	Acceptable range		
		lower limit ng/mL	target ng/mL	upper limit ng/mL
CONTROL 1	59	46	66	86
CONTROL 2	130	81	116	150

Kit Composition:

REF		LOT		REF		LOT	
KLIT655	CONTROL 1	268	2027-06	KLIT755	CONC ASSAYBUF	K250	2027-06
KLIT665	CONTROL 2	269	2027-06	KLZZ631	LUMINREAG	K268	2027-06
KLIT511	MTP	K249	2027-06	KLZZ879	CONC WASHBUF	K301	2027-07
KLIT545	CONC ENZCONJ	K269	2027-07				
KLIT615	CAL A-F	267	2027-06				

Valid edition of the instructions for use: 2024-10

This product has been tested successfully by the Quality Control Department and was released for sale according to the existing specifications.

Verified by: T.Schmidt

Accepted

Validation date: 2025-09-05

This document has been produced electronically and is valid without a signature.



IBL International GmbH
Flughafenstr. 52A, 22335 Hamburg, Germany

Tel.: + 49 (0) 40 532891 -0 Fax: -11
E-MAIL: ibl@tecan.com
WEB: www.tecan.com/ibl