

Quality Control Certificate



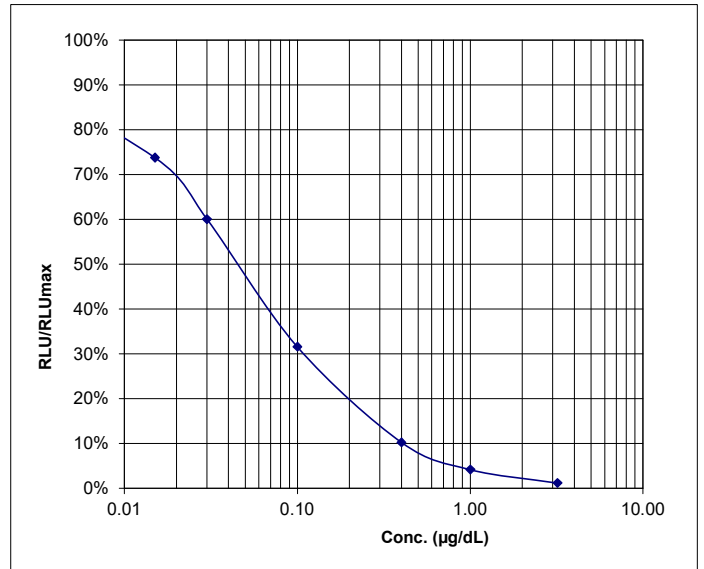
Cortisol Saliva Luminescence Immunoassay

REF RE62111 & RE62119	LOT LCL207	2027-01-31 YYYY-MM-DD
------------------------------	-------------------	---------------------------------

Final Release Results:

	Concentration µg/dL	Measured value RLU	Range RLU	RLU/RLUmax
CAL A	0	49377513	-	100%
CAL B	0.015	36431848	-	74%
CAL C	0.03	29652063	-	60%
CAL D	0.10	15594808	-	32%
CAL E	0.40	5049580	-	10%
CAL F	1.00	2071250	-	4%
CAL G	3.20	581053	-	1%

	Concentration found µg/dL	Acceptable range		
		lower limit µg/dL	target µg/dL	upper limit µg/dL
CONTROL 1	0.083	0.051	0.078	0.106
CONTROL 2	0.72	0.47	0.67	0.88



Kit Composition:

REF		LOT	
KLCL651/9	CONTROL 1	L488B-3A	2027-07
KLCL661/9	CONTROL 2	L489B-3A	2027-07
KLCL511	MTP	K113	2027-05
KLCL541/9	ENZCONJ	K114	2027-08
KLCL611/9	CAL A	L486-3A	2027-07
KLCL621/9	CAL B-G	L487B-3A	2027-07
KLZZ709	CONC WASHBUF	L970	2027-05

REF		LOT	
KLZZ641/9	LUMINREAG 1	K119	2027-05
KLZZ651/9	LUMINREAG 2	K120	2027-05

Valid edition of the instructions for use: 2022-10

This product has been tested successfully by the Quality Control Department and was released for sale according to the existing specifications.

Verified by: T. Borchert

Validation date: 2026-01-07

Accepted

This document has been produced electronically and is valid without a signature.



IBL International GmbH
Flughafenstr. 52A, 22335 Hamburg, Germany

Tel.: + 49 (0) 40 532891 -0 Fax: -11
E-MAIL: ibl@tecan.com
WEB: www.tecan.com/ibl