

# Quality Control Certificate



## Corticosterone ELISA

REF RE52211

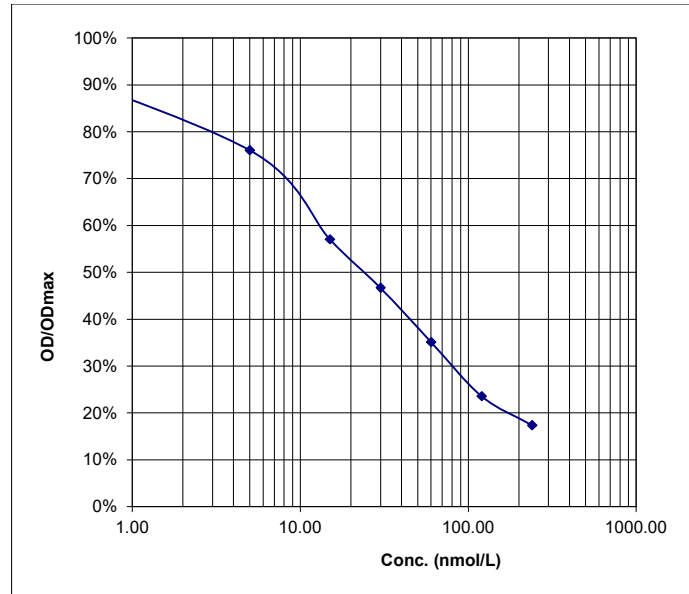
LOT 61K125

2027-11-12  
YYYY-MM-DD

### Final Release Results:

|       | Concentration<br>nmol/L | Measured<br>value<br>OD | Range<br>OD | OD/ODmax |
|-------|-------------------------|-------------------------|-------------|----------|
| CAL 0 | 0                       | 2.42                    | ≥ 1.20      | 100%     |
| CAL 1 | 5                       | 1.84                    | -           | 76%      |
| CAL 2 | 15                      | 1.38                    | -           | 57%      |
| CAL 3 | 30                      | 1.13                    | -           | 47%      |
| CAL 4 | 60                      | 0.85                    | -           | 35%      |
| CAL 5 | 120                     | 0.57                    | -           | 24%      |
| CAL 6 | 240                     | 0.42                    | -           | 17%      |

|              | Concentration<br>found<br>nmol/L | Acceptable range      |                  |                       |
|--------------|----------------------------------|-----------------------|------------------|-----------------------|
|              |                                  | lower limit<br>nmol/L | target<br>nmol/L | upper limit<br>nmol/L |
| Control Low  | 5.23                             | 3.06                  | 4.71             | 6.35                  |
| Control High | 89.1                             | 55.3                  | 85.2             | 115                   |



This product has been tested successfully by the Quality Control Department and was released for sale according to the existing specifications.

Verified by: Dr. Spangenberg

Validation date: 2025-12-22

**Accepted**

This document has been produced electronically and is valid without a signature.



IBL International GmbH  
Flughafenstr. 52A, 22335 Hamburg, Germany

Tel.: + 49 (0) 40 532891 -0 Fax: -11  
E-MAIL: [ibl@tecan.com](mailto:ibl@tecan.com)  
WEB: [www.tecan.com/ibl](http://www.tecan.com/ibl)