

Quality Control Certificate



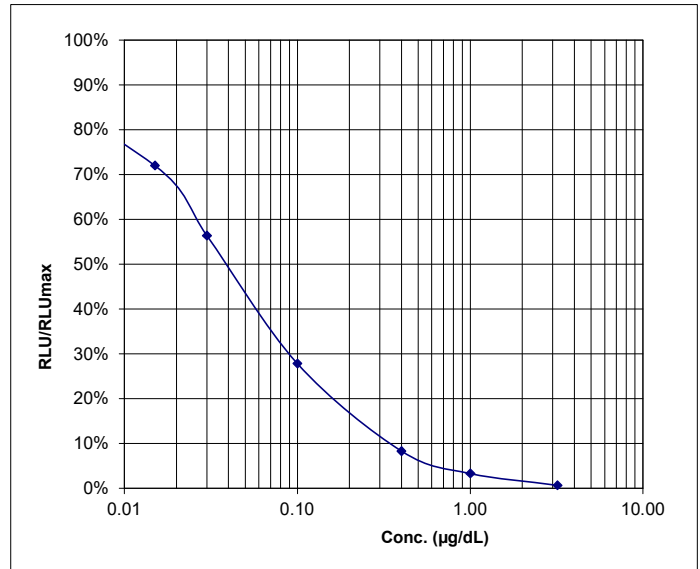
Cortisol Saliva Luminescence Immunoassay

REF 30221150 & 30221151	LOT LCL209	2027-04-30 YYYY-MM-DD
--------------------------------	-------------------	---------------------------------

Final Release Results:

	Concentration µg/dL	Measured value RLU	Range RLU	RLU/RLUmax
CAL A	0	24618260	-	100%
CAL B	0.015	17731370	-	72%
CAL C	0.03	13882588	-	56%
CAL D	0.10	6856333	-	28%
CAL E	0.40	2044045	-	8%
CAL F	1.00	814483	-	3%
CAL G	3.20	169820	-	1%

	Concentration found µg/dL	Acceptable range		
		lower limit µg/dL	target µg/dL	upper limit µg/dL
CONTROL 1	0.088	0.053	0.081	0.109
CONTROL 2	0.73	0.50	0.71	0.92



Kit Composition:

REF		LOT	
KLCL651/9	CONTROL 1	K284	2027-09
KLCL661/9	CONTROL 2	K285	2027-09
KLCL511	MTP	K281	2027-08
KLCL541/9	ENZCONJ	K296	2027-09
KLCL611/9	CAL A	L486-4B	2027-09
KLCL621/9	CAL B-G	K283	2027-09
KLZZ709	CONC WASHBUF	K288	2027-09

REF		LOT	
KLZZ641/9	LUMINREAG 1	K286	2027-06
KLZZ651/9	LUMINREAG 2	K287	2027-06

Valid edition of the instructions for use: 2024-11

This product has been tested successfully by the Quality Control Department and was released for sale according to the existing specifications.

Verified by: T. Borchert

Validation date: 2025-10-08

Accepted

This document has been produced electronically and is valid without a signature.



IBL International GmbH
Flughafenstr. 52A, 22335 Hamburg, Germany

Tel.: + 49 (0) 40 532891 -0 Fax: -11
E-MAIL: ibl@tecan.com
WEB: www.tecan.com/ibl